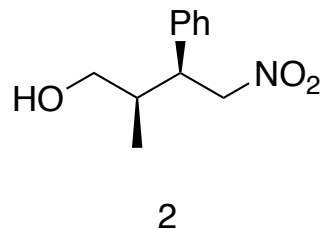


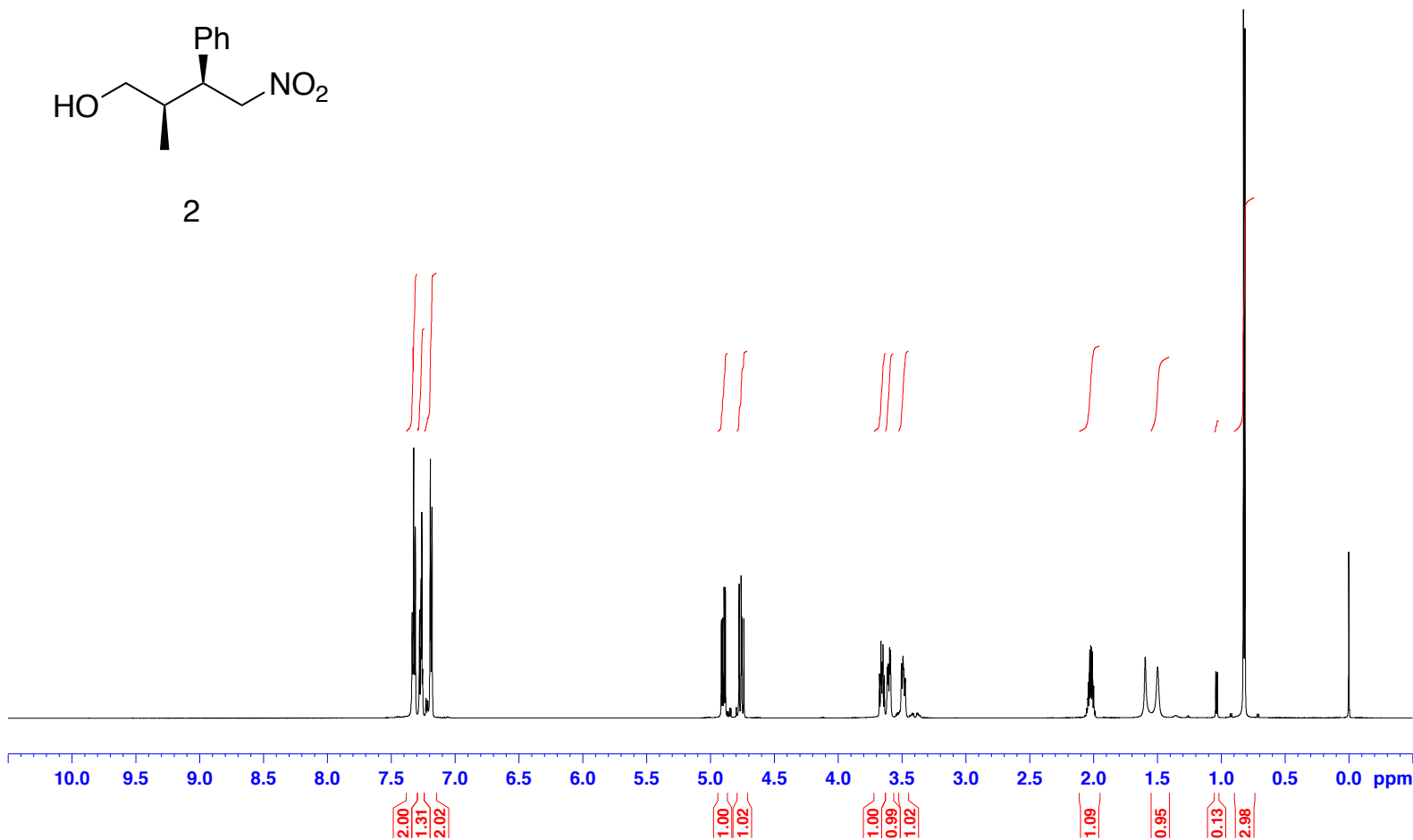
OS  
PROTON CDCI3 {Z:\data} ueda 46



7.3238  
7.3112  
7.2598  
7.1948  
7.1926  
7.1808

4.9136  
4.9034  
4.8926  
4.8823  
4.7749  
4.7589  
4.7538  
4.7379  
3.6753  
3.6642  
3.6594  
3.6531  
3.6484  
3.6373  
3.6144  
3.6068  
3.5964  
3.5889  
3.5032  
3.4915  
3.4860  
3.4739  
2.0403  
2.0325  
2.0287  
2.0209  
2.0171  
2.0094  
2.0055  
1.9978  
1.5946  
1.4972  
1.0415  
1.0300  
0.8248  
0.8132

-0.0000



Current Data Parameters  
NAME OS  
EXPNO 60  
PROCNO 1

F2 - Acquisition Parameters  
Date\_ 20170710  
Time\_ 10.37  
INSTRUM spect  
PROBHD 5 mm CPPBBO BB  
PULPROG zg30  
TD 65536  
SOLVENT CDCI3  
NS 16  
DS 2  
SWH 12019.230 Hz  
FIDRES 0.183399 Hz  
AQ 2.7262976 sec  
RG 17.5  
DW 41.600 use  
DE 10.00 use  
TE 300.0 K  
D1 1.00000000 sec  
TD0 1

==== CHANNEL f1 =====  
SFO1 600.1337060 MHz  
NUC1 1H  
P1 12.00 use  
PLW1 23.00000000 W

F2 - Processing parameters  
SI 65536  
SF 600.1300150 MHz  
WDW EM  
SSB 0  
LB 0.30 Hz  
GB 0  
PC 1.00